

# AFABA

## ESTADISTICAS

### SOYA



2015



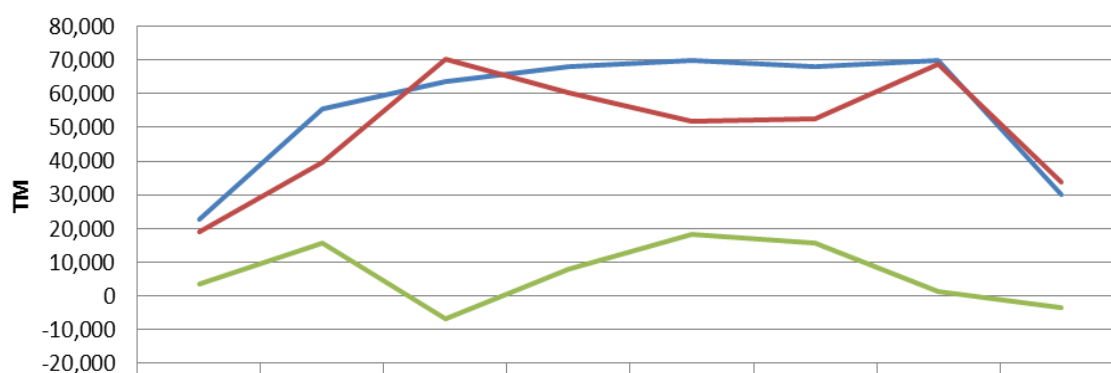
UNIDOS TRANSFORMAMOS LA NATURALEZA EN ALIMENTOS

## 14.- ESTADISTICAS SOYA NACIONAL

### COSECHA SOYA NACIONAL 2007-2014

| AÑO  | Superficie sembrada | Producción en grano seco y limpio | Rendimiento | Registro bolsa URTF | % Incremento | Diferencia |
|------|---------------------|-----------------------------------|-------------|---------------------|--------------|------------|
|      | (Ha.)               | (Tm.)                             | (Tm./Ha.)   | (Tm)                | (Tm)         | (Tm)       |
| 2007 | 19,791              | 22,589                            | 1.14        | 19,052              | 5%           | 3,537      |
| 2008 | 32,517              | 55,363                            | 1.70        | 39,661              | 10%          | 15,702     |
| 2009 | 40,908              | 63,591                            | 1.55        | 70,276              | 18%          | -6,685     |
| 2010 | 41,613              | 68,160                            | 1.64        | 60,311              | 15%          | 7,849      |
| 2011 | 41,176              | 70,000                            | 1.70        | 51,737              | 13%          | 18,263     |
| 2012 | 40,137              | 68,233                            | 1.70        | 52,479              | 13%          | 15,754     |
| 2013 | 41,176              | 70,000                            | 1.70        | 68,783              | 17%          | 1,217      |
| 2014 | 17,000              | 30,000                            | 1.76        | 33,658              | 9%           | -3,658     |

### SOYA NACIONAL



|                                     |        |        |        |        |        |        |        |        |
|-------------------------------------|--------|--------|--------|--------|--------|--------|--------|--------|
| — Producción en grano seco y limpio | 22,589 | 55,363 | 63,591 | 68,160 | 70,000 | 68,233 | 70,000 | 30,000 |
| — Registro bolsa URTF               | 19,052 | 39,661 | 70,276 | 60,311 | 51,737 | 52,479 | 68,783 | 33,658 |
| — Diferencia                        | 3,537  | 15,702 | -6,685 | 7,849  | 18,263 | 15,754 | 1,217  | -3,658 |

Dato actualizado hasta el 30/01/15

FUENTE: Registro Bolsa de Productos/ URTF/COBUSGROUP/MAGAP

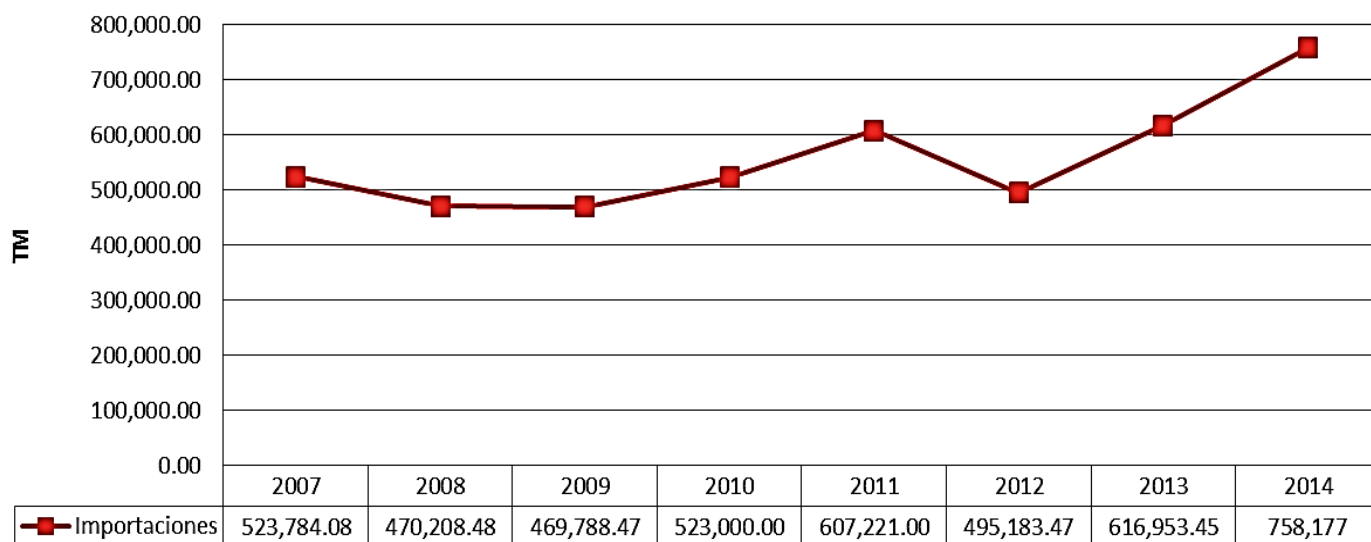
Elaboración: Departamento de Estadísticas AFABA

## 15.- ESTADISTICAS SOYA IMPORTADA

### IMPORTACIONES DE SOYA ( 2007 - 2014 )

| AÑO  | Importaciones | %<br>Decremento |
|------|---------------|-----------------|
|      | TM            | TM              |
| 2007 | 523,784.08    | 12%             |
| 2008 | 470,208.48    | 11%             |
| 2009 | 469,788.47    | 11%             |
| 2010 | 523,000.00    | 12%             |
| 2011 | 607,221.00    | 14%             |
| 2012 | 495,183.47    | 11%             |
| 2013 | 616,953.45    | 14%             |
| 2014 | 758,177       | 17%             |

### IMPORTACIONES SOYA



Dato actualizado hasta el 30/01/15

Fuente: Banco Central del Ecuador /Manifiestos de Aduana/Cobusgroup/MAGAP

Elaboración: Departamento de Estadísticas AFABA

## PROCEDENCIA DE SOYA IMPORTADA

| PROCEDENCIA    | % Venta | TM Importada | Año  |
|----------------|---------|--------------|------|
| ESTADOS UNIDOS | 14%     | 54605        | 2009 |
| CHILE          | 7%      | 29095        |      |
| CHINA          | 0%      | 170          |      |
| PERU           | 0%      | 80           |      |
| ARGENTINA      | 79%     | 315562       |      |
| ARGENTINA      | 72%     | 366135       | 2010 |
| ESTADOS UNIDOS | 23%     | 115376       |      |
| BOLIVIA        | 5%      | 28276        |      |
| CHINA          | 0%      | 420          |      |
| ESTADOS UNIDOS | 42%     | 250186       | 2011 |
| ARGENTINA      | 34%     | 206861       |      |
| CHILE          | 11%     | 67000        |      |
| BRASIL         | 9%      | 54137        |      |
| PERU           | 3%      | 15500        |      |
| REINO UNIDO    | 1%      | 5370         |      |
| CHINA          | 0%      | 1254         |      |
| BOLIVIA        | 0%      | 200          |      |
| ESTADOS UNIDOS | 76%     | 447991       | 2012 |
| BRASIL         | 13%     | 75682        |      |
| ARGENTINA      | 6%      | 36945        |      |
| BOLIVIA        | 5%      | 27000        |      |
| CHINA          | 0%      | 942          |      |
| ESTADOS UNIDOS | 55%     | 337081       | 2013 |
| ARGENTINA      | 31%     | 193992       |      |
| BRASIL         | 8%      | 48187        |      |
| PERU           | 4%      | 22341        |      |
| BOLIVIA        | 1%      | 9060         |      |
| CHILE          | 1%      | 4500         |      |
| CHINA          | 0%      | 1790         |      |
| ARGENTINA      | 32%     | 240751       | 2014 |
| ESTADOS UNIDOS | 28%     | 208535       |      |
| BRASIL         | 4%      | 29211        |      |
| BOLIVIA        | 2%      | 17360        |      |
| URUGUAY        | 1%      | 9257         |      |
| PARAGUAY       | 1%      | 5053         |      |
| PERU           | 1%      | 4467         |      |
| CHILE          | 1%      | 4000         |      |
| CHINA          | 0%      | 2624         |      |

Dato actualizado hasta el 30/01/15

Fuente: Cobusgroup

Elaboración: Departamento de Estadísticas AFABA

## PROVEEDORES DE SOYA IMPORTADA

| PROVEEDOR                 | % Vendido | TM Ventidas | Año  |
|---------------------------|-----------|-------------|------|
| CARGILL AMERICAS, I       | 33%       | 131271      | 2009 |
| ATLAS TRADING & SHIP      | 32%       | 126039      |      |
| SEABOARD OVERSEAS LI      | 10%       | 41046       |      |
| CARGILL AMERICAS INC      | 6%        | 25424       |      |
| CARGILL TRADING, LLC      | 7%        | 26541       |      |
| SEABOARD OVERSEAS L       | 5%        | 20013       |      |
| SEABOARD OVERSEAS LT      | 5%        | 17026       |      |
| BUNGE LATIN AMERICA       | 1%        | 5398        |      |
| ADM EXPORT COMPANY        | 1%        | 4608        |      |
| BUNGE LATIN AMERICA,      | 0%        | 1893        |      |
| LOS DEMAS                 | 0%        | 250         |      |
| SEABOARD OVERSEAS LI      | 24%       | 121657      | 2010 |
| ATLAS TRADING & SHIP      | 21%       | 106055      |      |
| BUNGE LATIN AMERICA,      | 14%       | 73701       |      |
| CAI TRADING, LLC          | 10%       | 51498       |      |
| CARGILL AMERICAS, I       | 10%       | 50835       |      |
| BUNGE LATIN AMERICA       | 9%        | 45481       |      |
| SEABOARD OVERSEAS LT      | 6%        | 30876       |      |
| SEABOARD OVERSEAS L       | 5%        | 25767       |      |
| SEABORD OVERSEAS LIM      | 1%        | 3138        |      |
| DALIAN XINGLONGKEN O      | 0%        | 420         |      |
| LOS DEMAS                 | 0%        | 776         |      |
| SEABOARD OVERSEAS LI      | 23%       | 139815      | 2011 |
| SEABOARD OVERSEAS LT      | 20%       | 121751      |      |
| CARGILL AMERICAS, I       | 17%       | 103189      |      |
| ATLAS TRADING & SHIP      | 12%       | 74651       |      |
| BUNGE LATIN AMERICA,      | 13%       | 77149       |      |
| ADM AMERICAS, S DE R      | 4%        | 26328       |      |
| ADM AMERICAS, S. DE       | 4%        | 21530       |      |
| ADM AMERICAS S. DE R      | 2%        | 11701       |      |
| SEABOARD OVERSEAS L       | 2%        | 9080        |      |
| BUNGE LATIN AMERICA       | 2%        | 7168        |      |
| LOS DEMAS                 | 1%        | 8325        |      |
| BUNGE LATIN AMERICA,      | 39%       | 230847      | 2012 |
| ADM AMERICAS, S DE R      | 10%       | 55669       |      |
| SEABOARD OVERSEAS LI      | 13%       | 73694       |      |
| BUNGE LATIN AMERICA, LLC  | 8%        | 48354       |      |
| ADM GRAIN COMPANY         | 6%        | 32683       |      |
| ADM AMERICAS, S. DE       | 6%        | 36043       |      |
| SEABOARD OVERSEAS L       | 4%        | 25195       |      |
| ADM AMERICAS S. DE R      | 3%        | 20419       |      |
| CARGILL AMERICAS, I       | 4%        | 24000       |      |
| ADM AMERICAS S DE R       | 3%        | 16998       |      |
| LOS DEMAS                 | 4%        | 24464       |      |
| BUNGE LATIN AMERICA, LLC  | 33%       | 206252      | 2013 |
| S.A FOR ACCOUNT OF        | 5%        | 31921       |      |
| OR ADM GRAIN COMPANY      | 5%        | 30133       |      |
| COMPANY                   | 4%        | 26257       |      |
| CARGILL S.A.C.I.          | 4%        | 27500       |      |
| S.A FOR ACCOUNT OF        | 5%        | 28833       |      |
| BUNGE LATIN AMERICA LLC   | 5%        | 27487       |      |
| BUNGE LATIN AMERICA LLC   | 5%        | 27499       |      |
| BUNGE AGRITRADE S.A.      | 4%        | 24998       |      |
| LIMITED                   | 4%        | 24048       |      |
| LOS DEMAS                 | 26%       | 162021      |      |
| BUNGE LATIN AMERICA, LLC  | 21%       | 155958      | 2014 |
| BUNGE AGRITRADE S.A.      | 7%        | 55105       |      |
| NUTRIOIL S.A. FOR ACCOUNT | 5%        | 39617       |      |
| LUZAR TRADING, S.A.       | 5%        | 38280       |      |
| VICENTIN S.A.I.C.         | 4%        | 31054       |      |
| SA FOR ACCOUNT OF         | 5%        | 36300       |      |
| CARGILL S.A.C.I.          | 5%        | 35948       |      |
| ACCOUNT OF SEABOARD       | 4%        | 29995       |      |
| ADM AMERICAS S. DEL R.L.  | 4%        | 30899       |      |
| LOS DEMAS                 | 40%       | 305017      |      |

**CONSUMO APARENTE MAÍZ AMARILLO DURO**

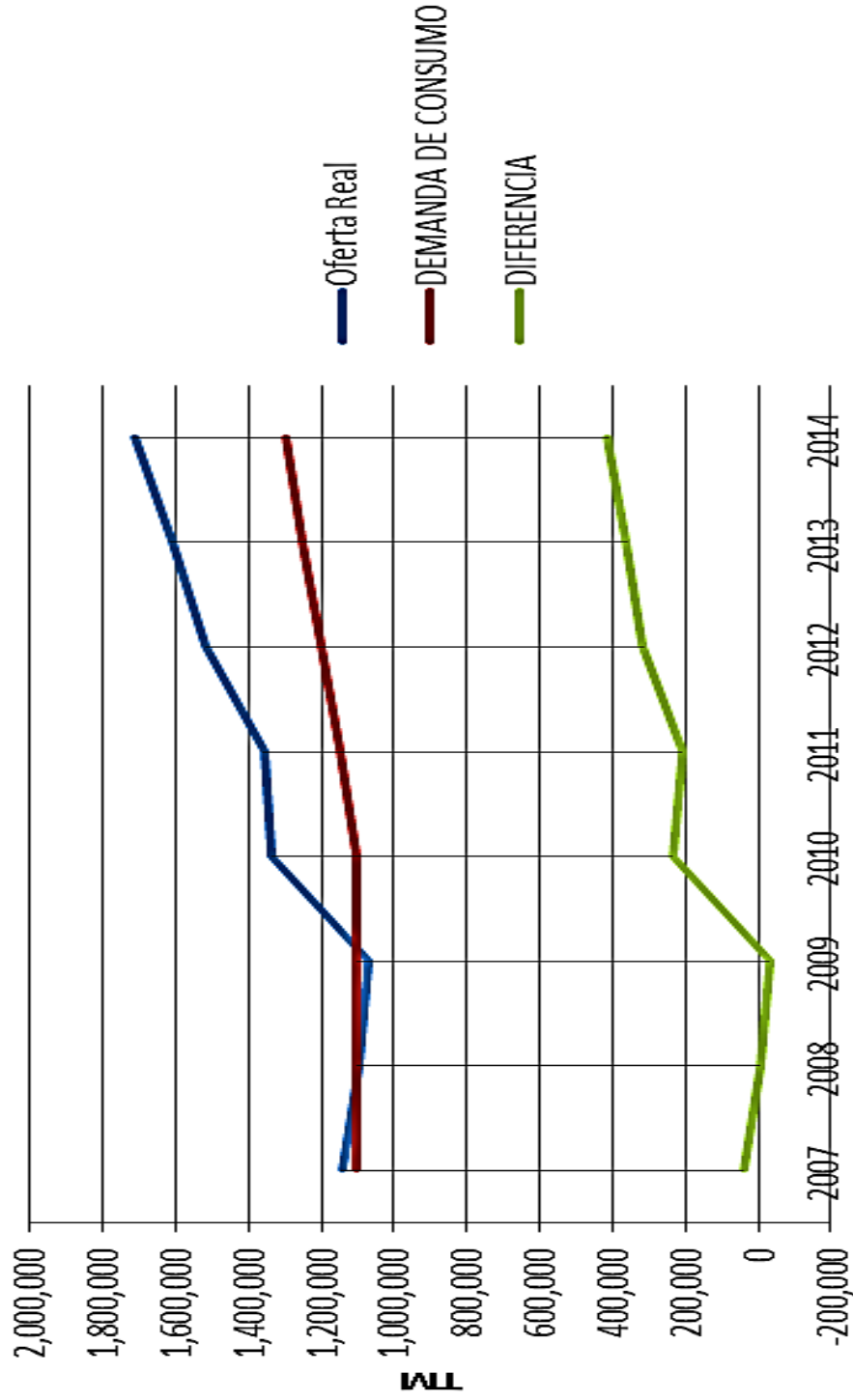
**2007-2014**

| Años | Producción | Importaciones | Exportaciones | Oferta Real | DEMANDA DE CONSUMO | DIFERENCIA |
|------|------------|---------------|---------------|-------------|--------------------|------------|
|      | TM         | TM            | TM            | TM          | TM                 | TM         |
| 2007 | 605,293    | 553,160       | 16,715        | 1,141,739   | 1,100,000          | 41,739     |
| 2008 | 787,129    | 327,953       | 18,560        | 1,096,521   | 1,100,000          | -3,479     |
| 2009 | 765,320    | 348,681       | 44,602        | 1,069,400   | 1,100,000          | -30,600    |
| 2010 | 868,027    | 471,695       | 3,535         | 1,336,187   | 1,100,000          | 236,187    |
| 2011 | 830,150    | 531,394       | 3,125         | 1,358,419   | 1,150,000          | 208,419    |
| 2012 | 1,215,193  | 302,830       | 2,718         | 1,515,305   | 1,200,000          | 315,305    |
| 2013 | 1,468,346  | 142,973       | 858           | 1,610,461   | 1,250,000          | 360,461    |
| 2014 | 1,600,588  | 114,043       | 1,289         | 1,713,342   | 1,300,000          | 413,342    |

Nota: OFERTA REAL= (PRODUCCION+IMPORTACION)-EXPORTACION

Nota: DEMANDA DE CONSUMO = 12 MESES + 1 MES DE RESERVA

# CONSUMO MAIZ AMARILLO DURO



Fuente: SIGAGRO / BCE / SENAE  
 Elaboración: Departamento de Estadísticas AFABA